



InnoMatch

powered by

EIC INNOVATION PROCUREMENT PROGRAMME

BMVision Kidney AI

BMVision Kidney AI pilot project

supplier

 **Better Medicine**

buyer

 **UNIVERSITÄTSmedizin.**
MAINZ



**Funded by
the European Union**

Funded by the European Union. Views and opinions expressed are however those of the author(s) only and do not necessarily reflect those of the European Union or European Innovation Council and SMEs Executive Agency. Neither the European Union nor the granting authority can be held responsible for them.



InnoMatch

powered by

EIC INNOVATION PROCUREMENT PROGRAMME

About the solution

BMVision Kidney

BMVision Kidney, is the world's first CE-marked AI solution for supporting radiologists in kidney cancer detection, certified as a Class IIa medical device under EU MDR 2017/745.

It automatically detects and measures cystic and solid kidney lesions on contrast-enhanced CT scans, classifying these into benign and malignant and helping to detect incidental lesions that fall outside the primary field of view.



Funded by
the European Union

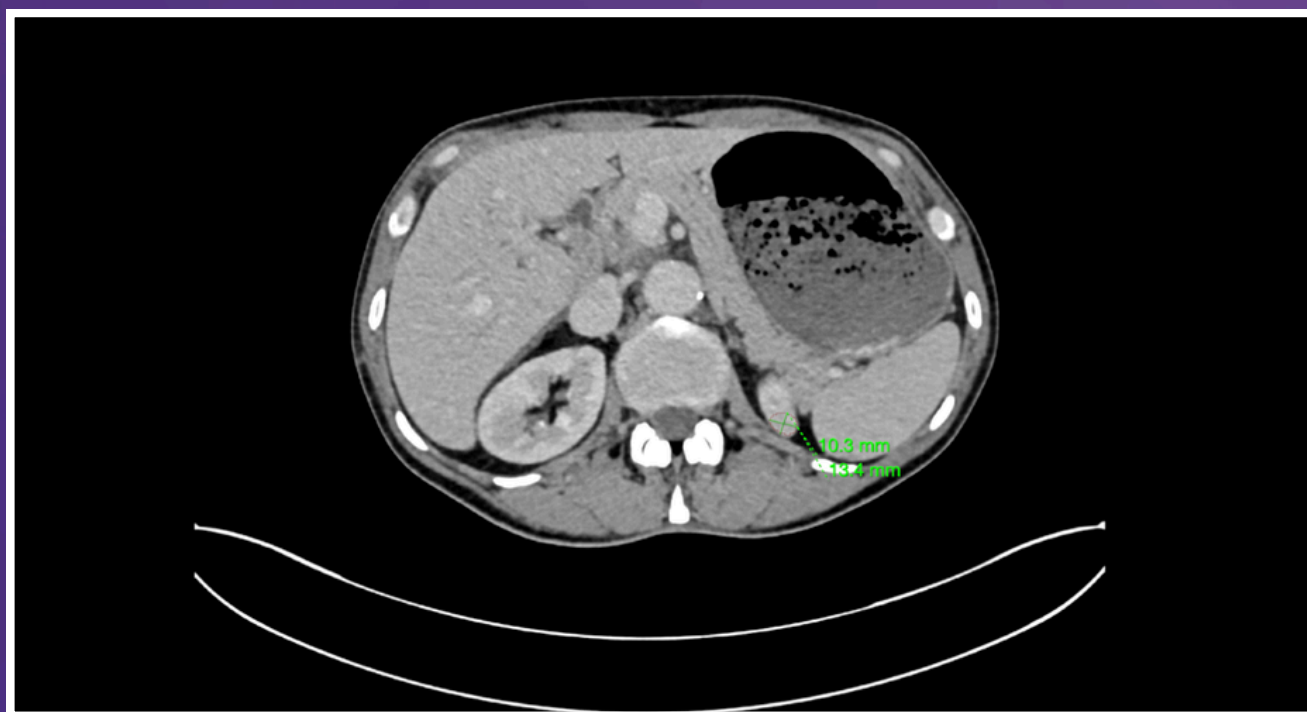
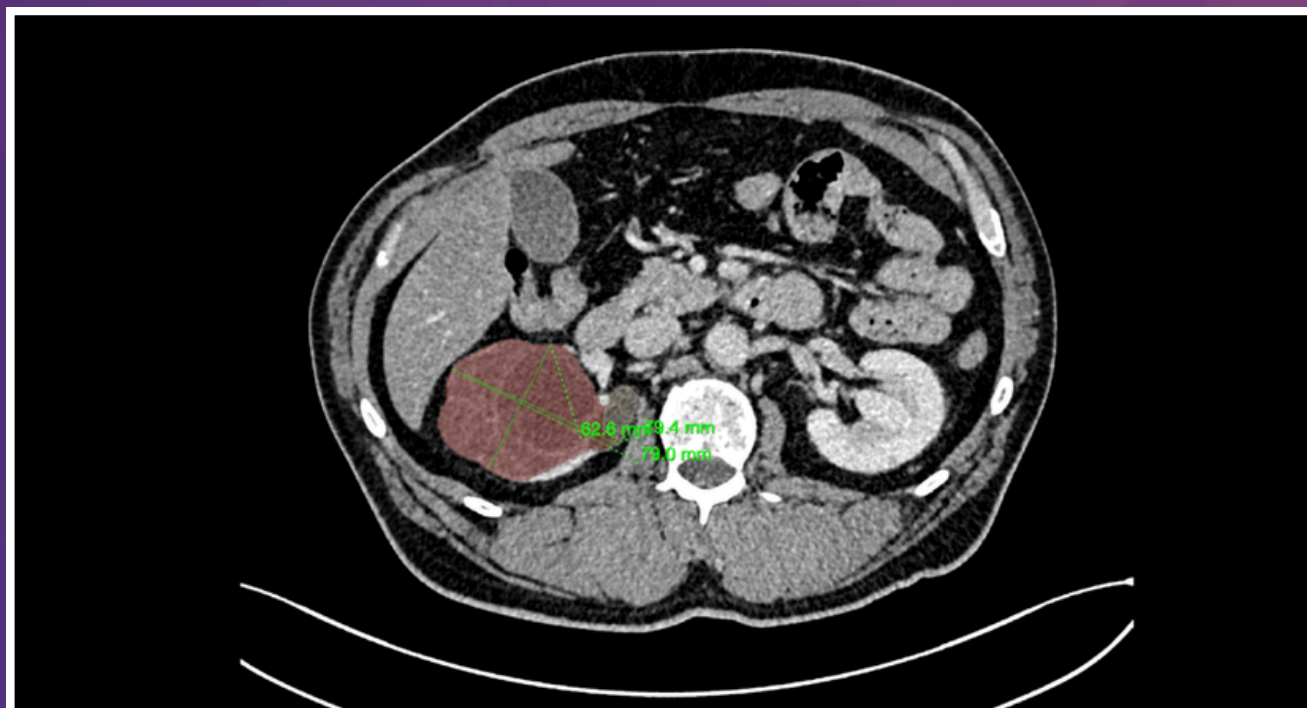
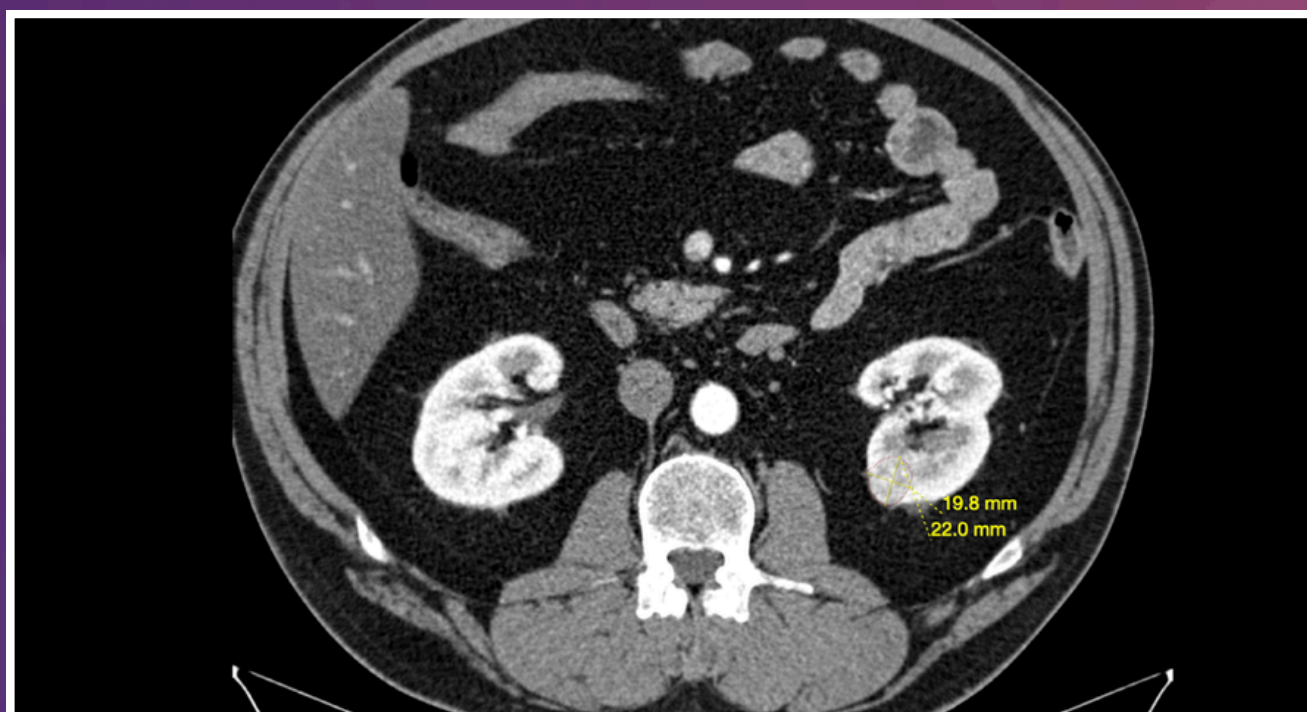
Funded by the European Union. Views and opinions expressed are however those of the author(s) only and do not necessarily reflect those of the European Union or European Innovation Council and SMEs Executive Agency. Neither the European Union nor the granting authority can be held responsible for them.



InnoMatch

powered by

EIC INNOVATION PROCUREMENT PROGRAMME



Funded by
the European Union

Funded by the European Union. Views and opinions expressed are however those of the author(s) only and do not necessarily reflect those of the European Union or European Innovation Council and SMEs Executive Agency. Neither the European Union nor the granting authority can be held responsible for them.



InnoMatch

powered by

EIC INNOVATION PROCUREMENT PROGRAMME

End-user

Large hospitals, that have both radiology and urology departments.

So that kidney lesions can be identified at the possibly early stage, with the help of Kidney AI running at radiology department. And then treated right away within the urology department of the same hospital.



Funded by
the European Union

Funded by the European Union. Views and opinions expressed are however those of the author(s) only and do not necessarily reflect those of the European Union or European Innovation Council and SMEs Executive Agency. Neither the European Union nor the granting authority can be held responsible for them.



InnoMatch

powered by

EIC INNOVATION PROCUREMENT PROGRAMME

Interested? Get in touch.

 **Better Medicine**

bettermedicine.ai/contact-us/

Learn more the pilot

innomatchproject.eu/pilots



**Funded by
the European Union**

Funded by the European Union. Views and opinions expressed are however those of the author(s) only and do not necessarily reflect those of the European Union or European Innovation Council and SMEs Executive Agency. Neither the European Union nor the granting authority can be held responsible for them.